

To: Ms. Ingrid Peters
Principal Fisheries Officer

From: Corwin D’Anjou
Fisheries officer

Date: 04/02/2021

Subject: ETP Annual Report 2020

Introduction

Incidental mortality, or bycatch, in fisheries has been demonstrated to be a serious threat to a range of endangered, threatened and protected (ETP) species (Alverson et al. 1996). Trawling is one of the most non-selective methods of fish capture. Industrial shrimp trawling in tropical waters is the leading offender in the capture of bycatch and accounts for about 27% of all global discard. The bycatch often consists of ETP species, juvenile and food-fish species and is therefore a threat to food security and sustainable fisheries production. In many shrimp-trawl fisheries several thousand turtles, stingray sharks among other species are caught and drowned each year. The impact, combined with other human activity such as long line fishing, hunting and coastal development, has resulted in six of the world's seven species of sea turtle being listed in the 2003 IUCN World Conservation Union Red List of Threatened Species. Five of these species are listed as critically endangered (high risk of extinction in the wild in the immediate future) and one species is listed as endangered (very high risk of extinction in the wild in the immediate future). The threat of these animals becoming extinct has also led to the listing of all sea turtle species in Appendix 1 of the Convention on International Trade in Endangered Species (CITES). Additionally, proper management and monitoring of these species is paramount to sustainable development.

Boats Reporting ETP Species Encounter

A total of 45 boats reported contact with ETP species for the year 2020. (15) vessels from Noble House Seafood, (27) vessels from Pritipaul Singh investment and (3) vessels from Gopie Investment Inc. submitted data reporting their ETP Encounter.

Pritipaul Singh Investment	Noble House Seafoods	Gopie Investment Inc.
----------------------------	----------------------	-----------------------

Maria Ym 70	Trade Winds	Angel Wing 1
Maria Zo	Olivia	Angel Wing 3
Maria Ym 71	World Friend 101	Esperanza 3
Sea Knight	World Friend 307	NIL
Patriot	Gulf Sun	NIL
Maria Tw	Sugam	NIL
Typhoon 88	Holly G	NIL
Angel eyes	Screamer	NIL
Angel wing 3	Pacuma	NIL
Sunrise 94	Shark 2	NIL
Falcon	Taipan	NIL
Rebel 95	World Friend 508	NIL
Stephanie	Tarek	NIL
Maria Ym 74	Bangamary	NIL
Divinity	Divinity	NIL
Miss Emma	NIL	NIL
Maria Af	NIL	NIL
Mv Defiant	NIL	NIL
Shallow Water	NIL	NIL
Maria Ym 72.1	NIL	NIL
Maria Ym 83.1	NIL	NIL
Maria Su	NIL	NIL
Maria Ca	NIL	NIL
Liberty 99	NIL	NIL
Maria Pa	NIL	NIL
Gulf Stream	NIL	NIL

ETP COUNT BY QUARTER

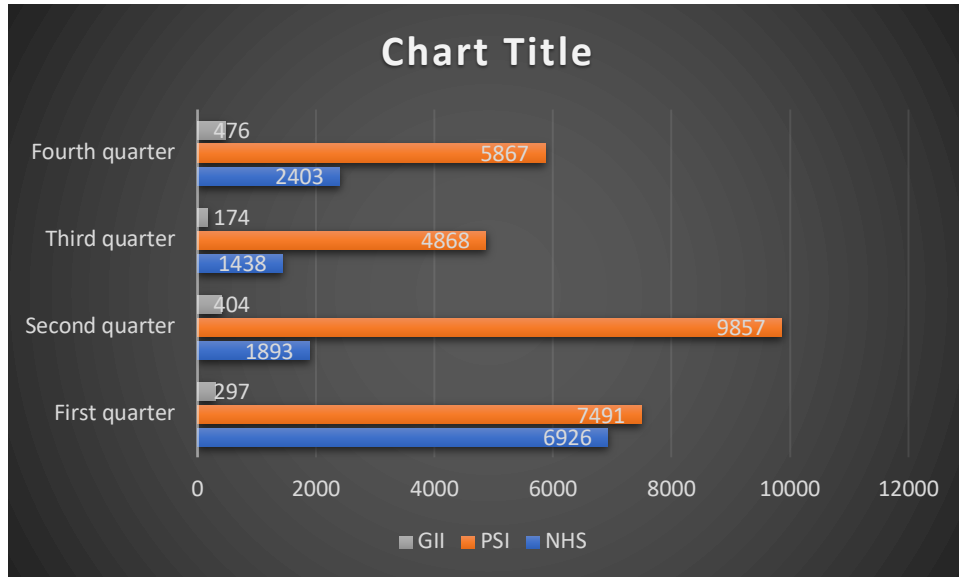


Figure 1 ETP Count by Quarter

The figure: ETP encounter by the various companies for the year 2020. The third quarter shows the least interaction with ETP species by the various company vessels, Collectively, NHS, GII and PSI encountered six thousand four hundred and eighty (6,480) for the third quarter. Compared with the first quarter of the year which had the greatest collective encounter which was fourteen thousand seven hundred and fourteen (14,714) interactions

Figure2-comparison of NHS, PSI and GII

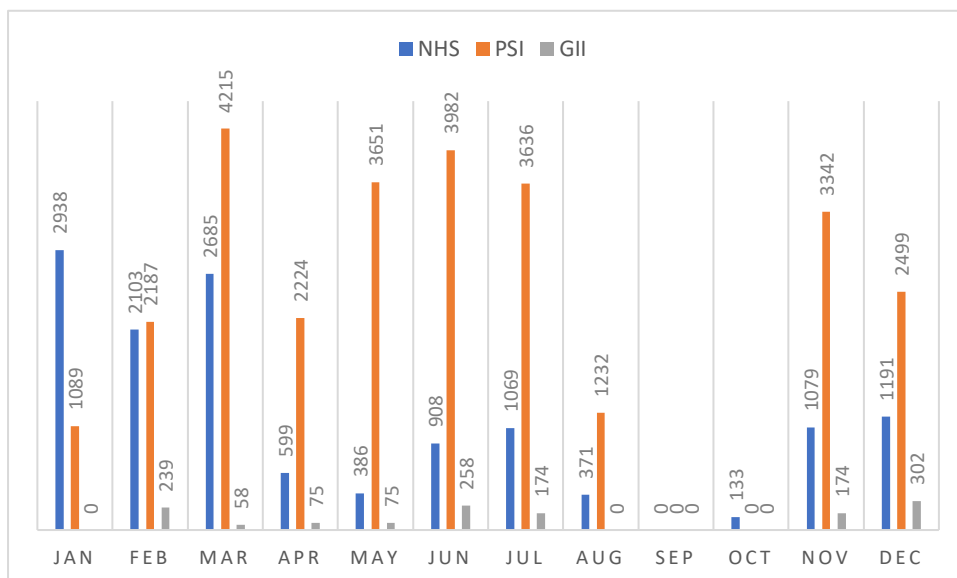
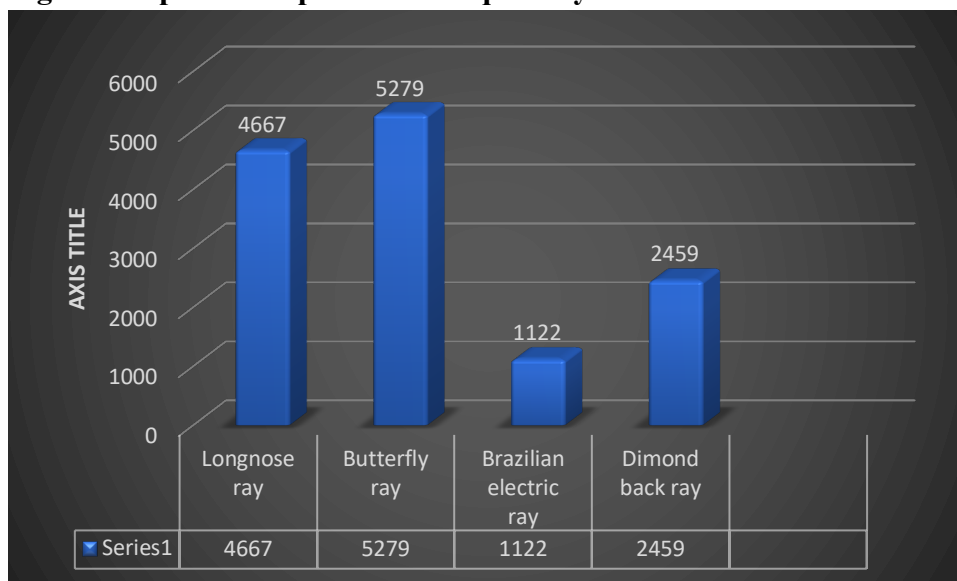


Figure 2: Month-by-month comparison of ETP encountered of vessels owned by Nobel House Seafood, Pritipaul Singh Investment and Gopie Investment Inc.

The month of October had the lowest number of ETP encountered by NHS vessels. It produced a total of one hundred and thirty-three (133) interactions. The month of January saw the highest number of interactions (2938) for the same company. The month of January had the lowest number of ETP interactions by PSI vessels. It produced a total of one thousand and eighty-nine (1089) encounters. The month of March saw the highest interactions four thousand two hundred and fifteen (4215) same company. Gopie Investment Inc. saw its highest ETP interaction in the month of December with three hundred and two (302), and the lowest month of interaction was March with seventy-five (75) encounters. There was no interaction for the month of September because the closed season which commenced on the 31st August 2020 and concluded on the October 26th 2020

Species encountered by company

Figure: 3 Species composition and quantity



(NHS)

A total of thirteen thousand five hundred and twenty-seven (13527) interactions were reported by NHS Vessels for the year 2020. Four species were encountered in these interactions. The butterfly ray accounts for the species with the highest number of interactions and it stood at five thousand two hundred and seventy-nine (5279), which constitute 39% of the total interactions. The longnose ray had the second highest encounter,

with four thousand six hundred and sixty-seven (4667) and it constitute 34% of the total. Those two species together make up 73% of the total ETP interactions.

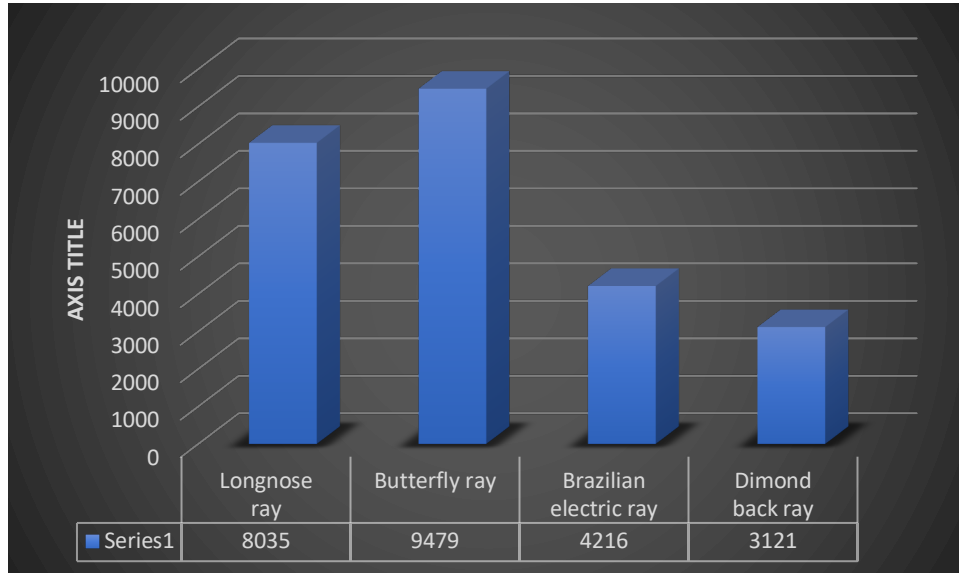


Figure4: Species composition and quantity (PSI)

A total of twenty-four thousand eight hundred and fifty-one (24,851) interactions were reported by PSI Vessels for the year 2020. Four species were encountered in these interactions. The Butterfly ray, accounted for the species with the highest interaction and it mounted at nine thousand four hundred and seventy-nine (9479), which constitute forty one percent (38%) of the total interactions. The Longnose ray had the second highest encounter, with eight thousand and thirty-five (8035) and it constitute forty (32%) of the total. Those two species together make up 70% of the total ETP interactions. The Diamond Back ray produced three thousand one hundred and twenty-one (3121) encounters, and this represented the species with the lowest number of interactions when compared to other species

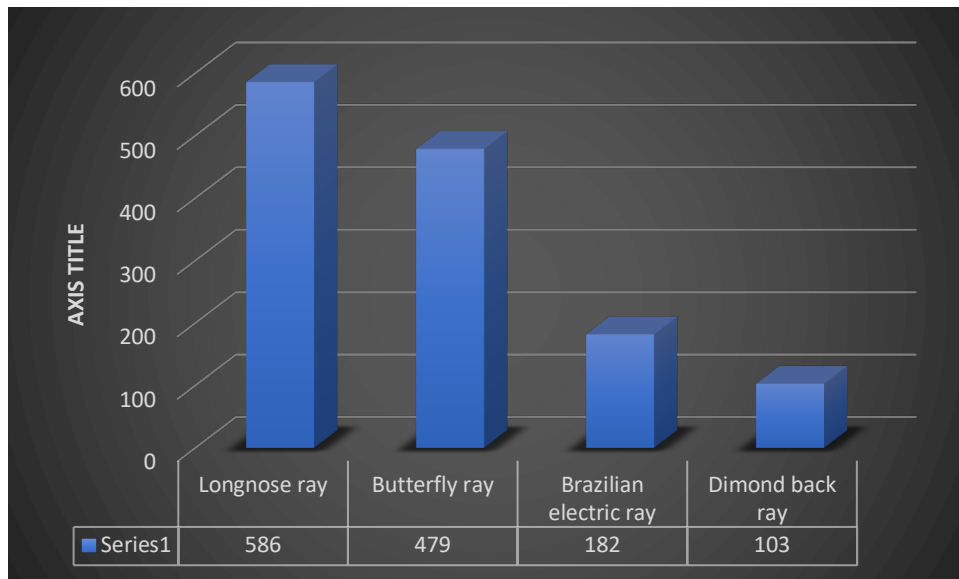
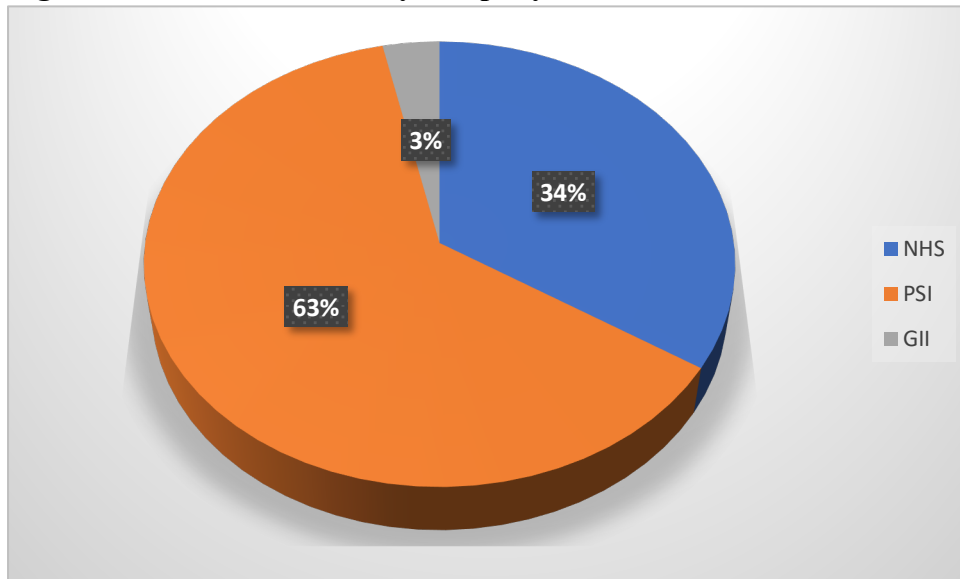


Figure 5: Species composition and quantity (GII)

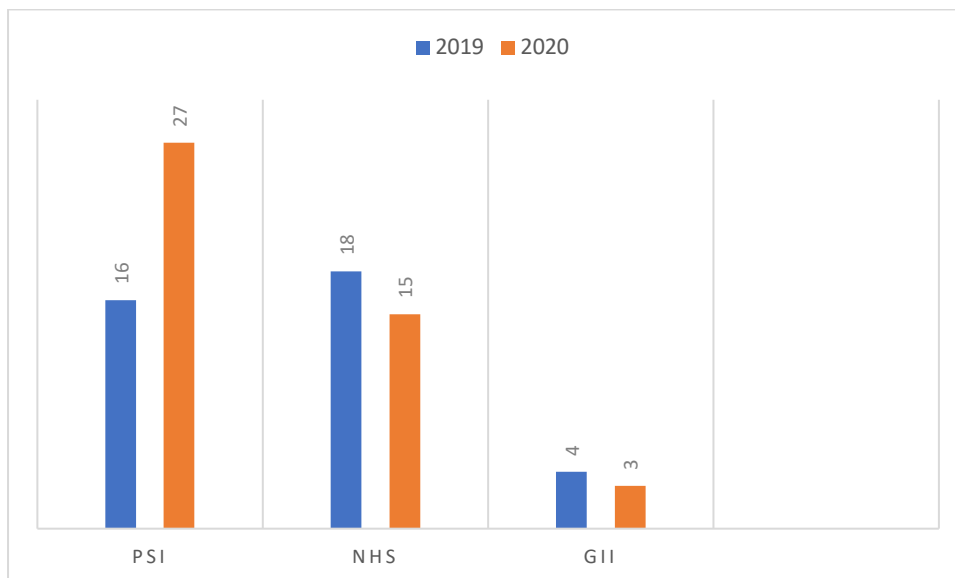
A total of one thousand three hundred and fifty (1,350) interactions were reported by GII Vessels for the year 2020. Four species were encountered in these interactions. The Longnose ray, accounted for the species with the highest interaction and it mounted at five hundred and eighty-six (586), which constitute forty-one percent (43%) of the total interactions. The Butterfly ray had the second highest encounter, with four hundred and seventy-nine (479) and it constitute forty (35%) of the total. Those two species together make up 78% of the total ETP interactions. The Diamond Back ray produced one hundred and three (103) encounters, and this represented the species with the lowest number of interactions when compared to other species

Figure 6: ETP interactions by company



The figure above depicts the overall ETP interface by company. Nobel House Seafood was responsible of thirty-four percent (34%) of all reported interactions, Pritipaul Singh Investments was responsible for sixty-three percentages (63%) and GII 3% of all interactions.

Interaction comparison of 2019 and 2020.



PSI saw an increase in the vessels reporting ETP for the year 2020 by 11 vessels. NHS saw a decrease of the vessels reporting ETP in the year 2020 by 3 vessels and GII had an increase by 1 vessel reporting the ETP encounter for the year 2020.

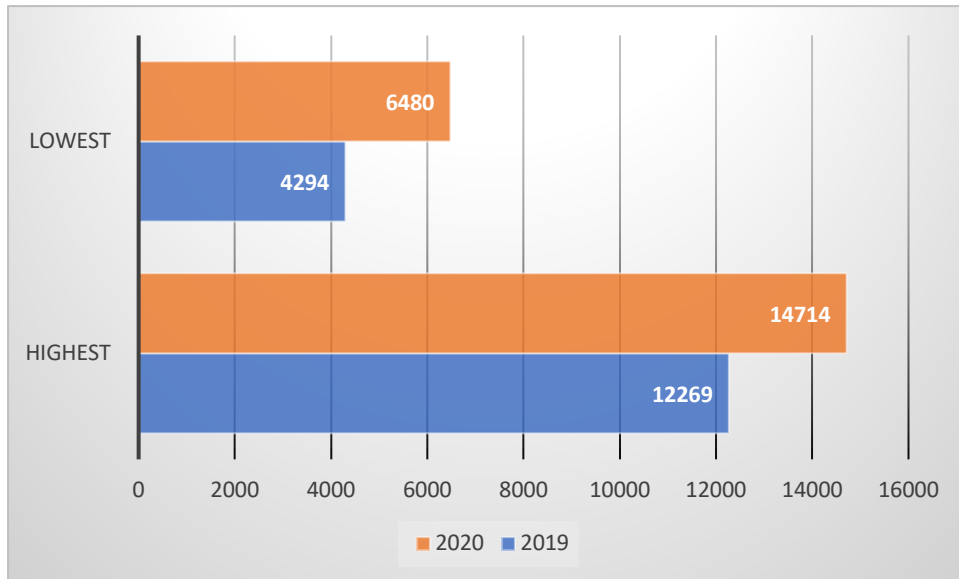
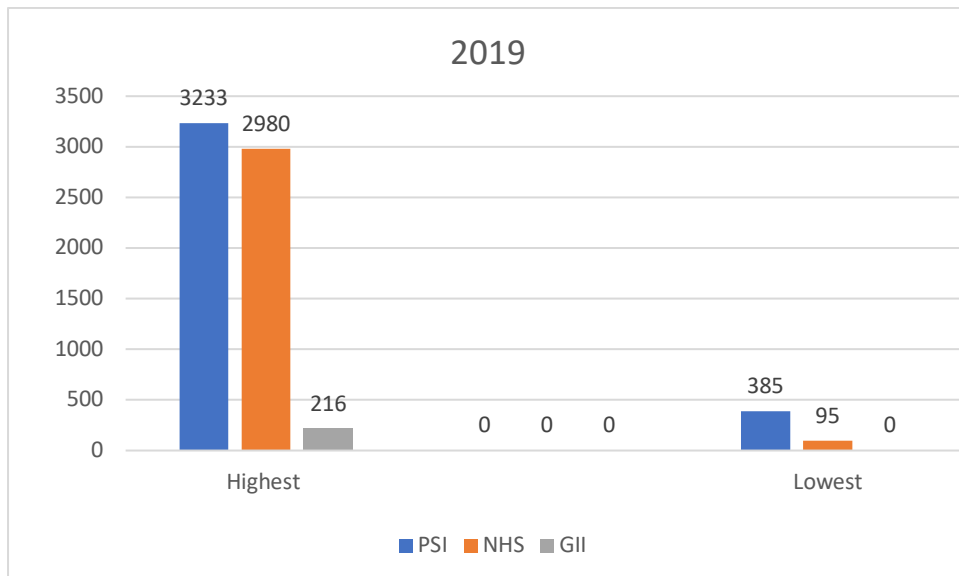
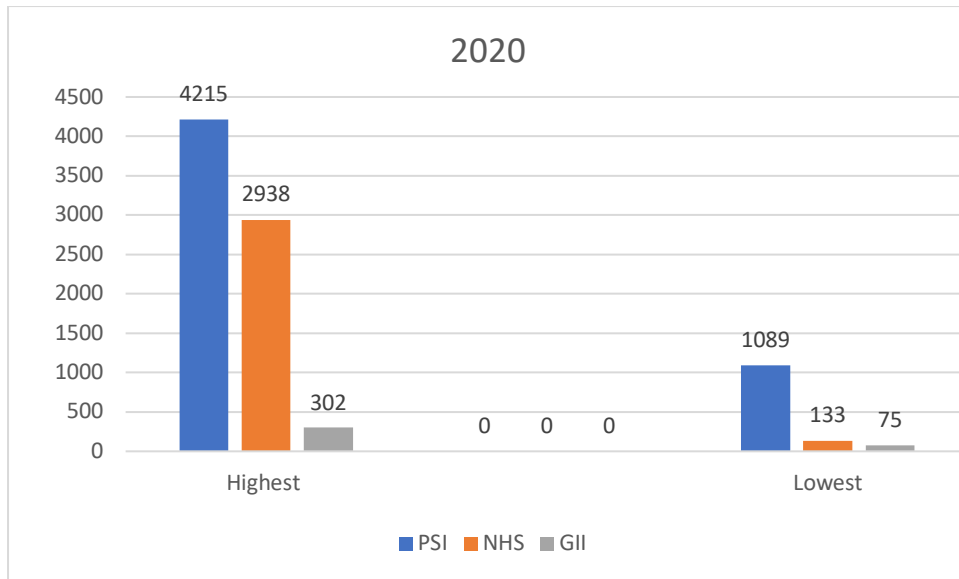


figure above illustrates the highest and lowest ETP encounter for the years 2019, 2020.

The second quarter of 2019 saw the highest ETP encounter with 12,269. The third quarter for the same year saw a record low of 4294. The highest encounter by quarter for the year 2020 was 14,714 belonging to the first quarter and the lowest 6480 belonging to the third quarter.



The above figure shows the highest and lowest ETP interaction by company for the year 2019



The above figure shows the highest and lowest ETP interaction by company for the year 2020.

The close season for 2019 was September 1st to October 22nd, whereas 2020 saw the season being closed from August 31st to October 26th.

NHS	2019	2020
Longnose	5228	4667
Butterfly	6327	5279

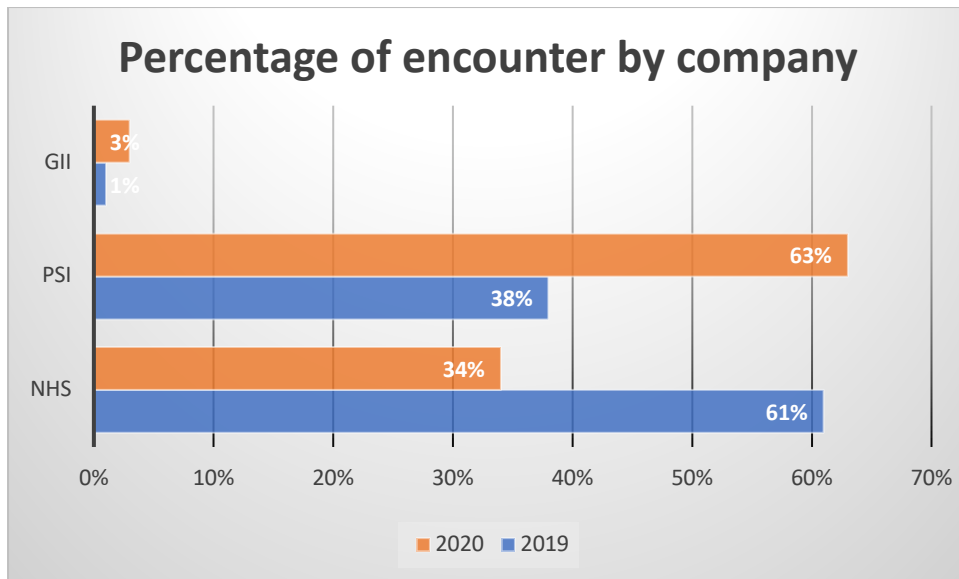
the above table shows a comparison of butterfly and longnose rays for the years 2019, 2020 for Noble House Seafoods.

Noble House Seafoods reported a reduction in the Longnose and Butterfly rays in 2020 when compared to the previous year.

PSI	2019	2020
Longnose	4473	8035
Butterfly	4435	9479

the above table shows a comparison of butterfly and longnose rays for the year 2019, 2020 for Pritipaul Singh Investments Inc.

Pritipaul Singh Investment Inc. saw a marked increase in the numbers of Longnose and Butterfly rays being reported for the year 2020 when compared to the previous year.



The figure above depicts the annual percentage of encounters by the company for the duration of 2020 in comparison with that of 2019.

Challenges

There were some difficulties emanating from the analysis of the ETP log sheets since vital information was omitted. The information includes boat name, Boat registration number, area fished and date.

Of note, the untimely submission of the data by all Seabob processors has led to much inefficiency with regards to the prompt reproduction of 2020 ETP report.

Moreover, although GII submitted ETP reports for that entire year of 2020, the captains reported ETP encounter for only three vessels for the year. If all vessels are not reporting ETP encounters, then we will not have a true representation of what occurs on sea.

Recommendation

- ❖ Continuous training needs to be carried out with the various industrial companies with respect to ETP species identification and filling of log sheet correctly. Further captains need to be encouraged to fill their log sheets on sea and not when they dock at their respective landing sites. This will reduce the incidence of the generation of falsified data.

- ❖ In order to be presented with a fishing license from the fisheries department, each vessel that is engage in the harvesting of marine fauna in Guyana's Exclusive Economic Zone must produce their log sheet. I believe in order to mitigate the effects of untimely submission and no submission of data, these rules **MUST** to be enforced.

Corwin D'Anjou
Fisheries Officer
Fisheries Department

