

Ministry of Agriculture Fisheries Department

Vessel Monitoring Systems Annual Report 2016

**Mr. Mikhail B. Amsterdam
Fisheries Officer**

Executive Summary

This report contains the analysis of the Vessel Monitoring (VMS) database for the period January 1, 2016 to December 31, 2016. The licensed trawling vessels were monitored using the Meta Fisheries Software Version: 2.6.13 (Mapping environment for tracking application), continuous monitoring is conducted at the Legal and Inspectorate Unit of the Fisheries Department, Ministry of Agriculture, Guyana.

Several activities were monitored and highlighted these include departure and arrival dates, days at sea, length of trips and infringements; The industry's four major companies Pritipaul Singh Investment Inc. (Mc Doom) and (Providence), Bev Processors Inc., Guyana Quality Seafood Inc. and Noble House Seafoods Ltd. were monitored independently and their information presented at the Seabob working group's monthly meeting.

In 2016 Seabob vessels spent a total of 15,416 nominal Days at Sea (DAS), which represents an 83.92% usage of the maximum 18,368 nominal DAS, while the industrial average of days spent at sea per trip was 8. The total median industrial trip per month was 3.4. The total number of infringements for the period under review was three hundred and ninety-six (396) of which two hundred and fifty-five (255) were No Trawl Zone Entry (NTZE) while one hundred and forty-one (141) No Beacon Signal Receive (NBSR) were recorded.

Table of Contents

1. Overview of the Vessel Monitoring System Activates.	3
1.1. Details of the monitored area:	3
Image.1. Guyana’s Exclusive Economic Zone highlighted in red, the target area of all Vessel Monitoring System (VMS) activates.	4
2. The Industrial Seabob Fleet and company’s being monitored.	5
Figure. 1. A comparison of the industrial Seabob vessels by days spent at sea.	6
Figure. 2. Representative analysis of the days at sea usage for the industrial Seabob companies.	7
Figure. 3. Shows the Monitoring Systems Analysis of Noble House Seafoods Ltd. Seabob vessels for 2016.8	
Figure. 4. Shows the Monitoring Systems Analysis of Pritipaul Singh Investments Inc. Seabob vessels for 2016.	9
Figure. 5. Shows the Monitoring Systems Analysis of B.E.V Processors Inc. Seabob vessels for 2016.	10
Figure. 6. Shows the Monitoring Systems Analysis of Guyana Quality Seafoods Inc. Seabob vessels for 2016.	11
3. Analysis of Industrial Seabob Vessels that exceeded the total allotted days at sea and the overall industrial compliance average comparison.	12
Vessels which exceed the established 224 days at sea	12
Infringements	13
Total infringements of the industrial Seabob fleet.	13
Figure. 7. Company Comparison of infringements; No Beacon Signal and No Trawling Zone Entry.	14
Company Comparison of infringements; No Beacon Signal and No Trawling Zone Entry.	15
Appendix	17

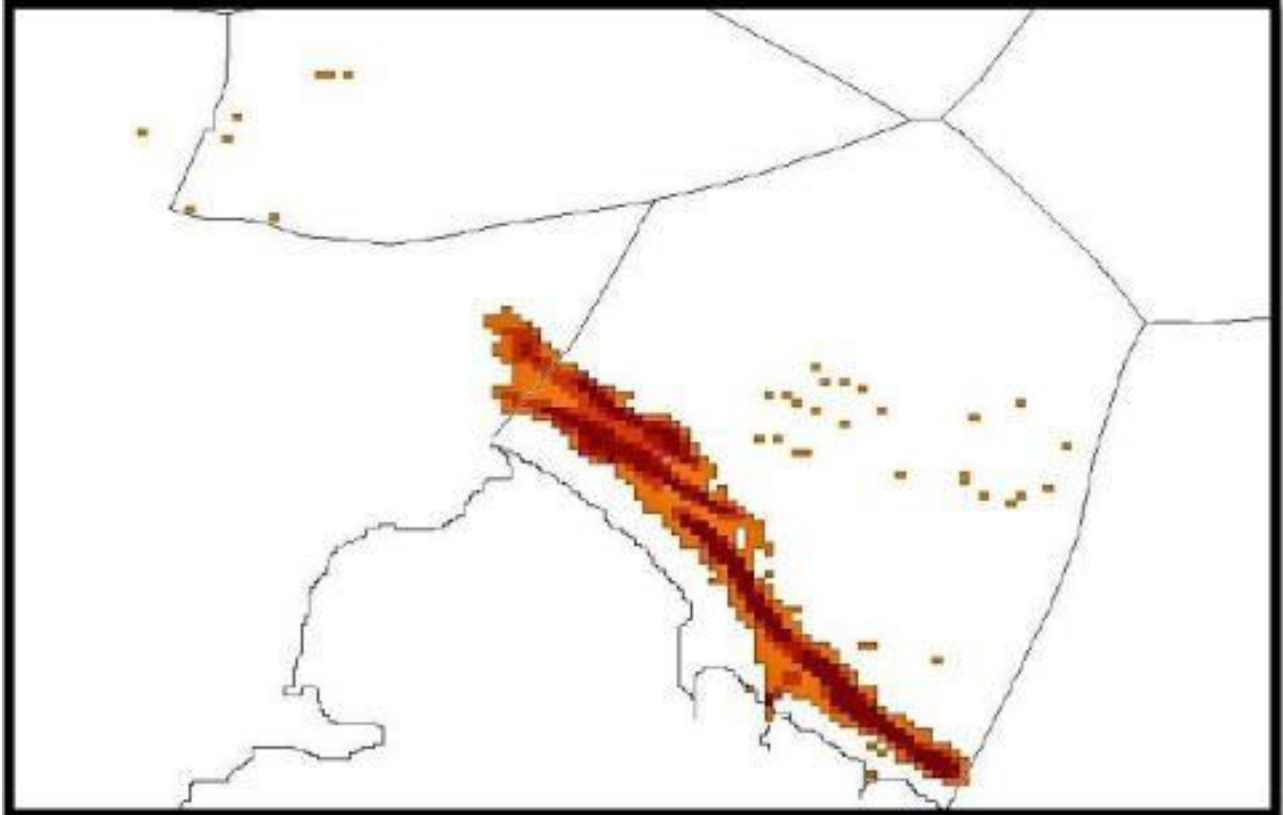
1. Overview of the Vessel Monitoring System Activates.

The Legal and Inspectorate Unit (L&IU) of the Fisheries Department, Ministry of Agriculture, is responsible for monitoring control and surveillance services in the fisheries sector. The unit is equipped with vessel monitoring software (Argos) and has been recording data since October, 2013. The primary target of these activities is the industrial Seabob fleet however data from other bottom trawl and longline vessels equipped with monitoring beacons operating with the country's exclusive economic zone are recorded.

1.1. Details of the monitored area:

Country:	Guyana
Place type:	EEZ
Latitude:	8° 36' 53.3" N (8.61480859°)
Longitude:	57° 40' 8.3" W (-57.66896753°)
Precision:	371038 meters
Min. Lat:	5° 29' 10" N (5.4861°)
Min. Long:	59° 59' 25" W (-59.9903°)
Max. Lat:	10° 41' 35.9" N (10.6933°)
Max. Long:	55° 46' 32.7" W (-55.7758°)

Image.1. Guyana’s Exclusive Economic Zone highlighted in red, the target area of all Vessel Monitoring System (VMS) activates.

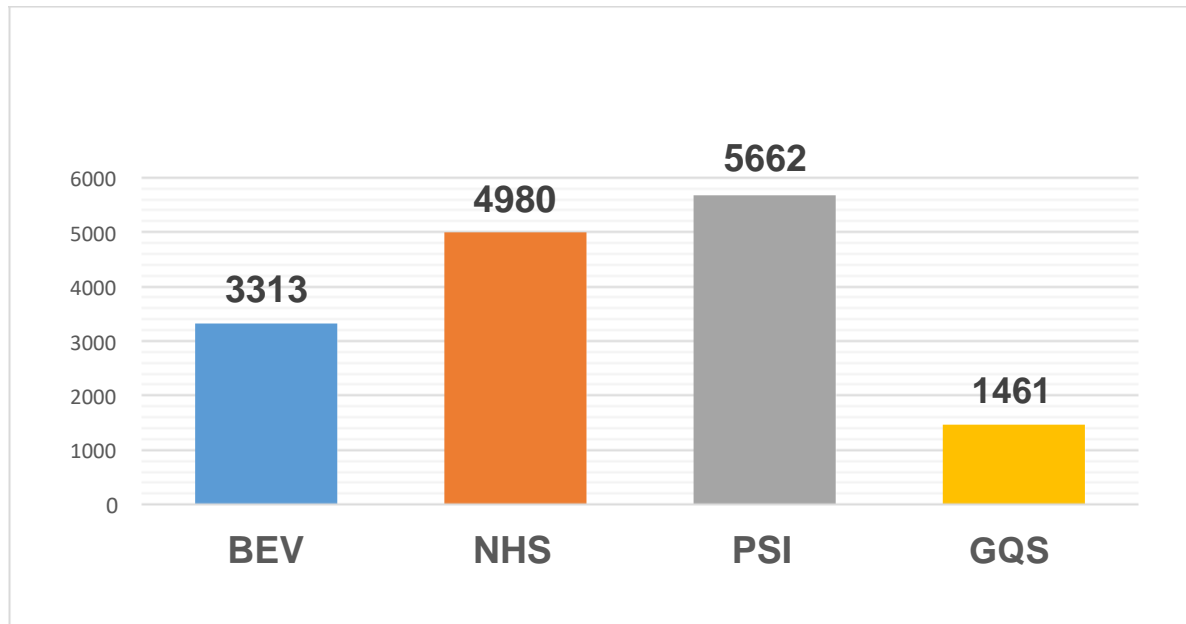


Highlights the total area fished for the year 2016. The colorations of red and orange are representative of Seabob trawling intensities, The Red areas represents “target ground” which presented the highest satellite pings. The top 75% of all trawling activities were carried out in the “red zones” and the clear distinction, is a good indicator of Guyana Vessel Monitoring Systems Regulation efforts, which limits industrial fishing (Seabob) to above the 7 fathom line but below the 18 fathom, this is represented as the clusters closest to shore while the Prawn industry vessels are represented as the third away from the coastline which is above the 18 fathom lines (prawn vessel boundary). The scattered dots off the continental shelf break are representative of Guyana’s budding deep seas fishing explorations.

2. The Industrial Seabob Fleet and company's being monitored.

Eighty-three (83) bottom trawl Seabob vessels were continually monitored in 2016. These boats were allowed a total of 224 nominal days at sea in accordance with the Harvest control rule. The Seabob vessels were permitted to operate in above the established 7 fathom line along Guyana's coastline but below the 18 fathom line established in Guyana's Exclusive Economic Zone, breach of these designated fishing grounds for Seabob actives were considered infringements along with surpassing the nominal days at sea.

Figure. 1. A comparison of the industrial Seabob vessels by days spent at sea.



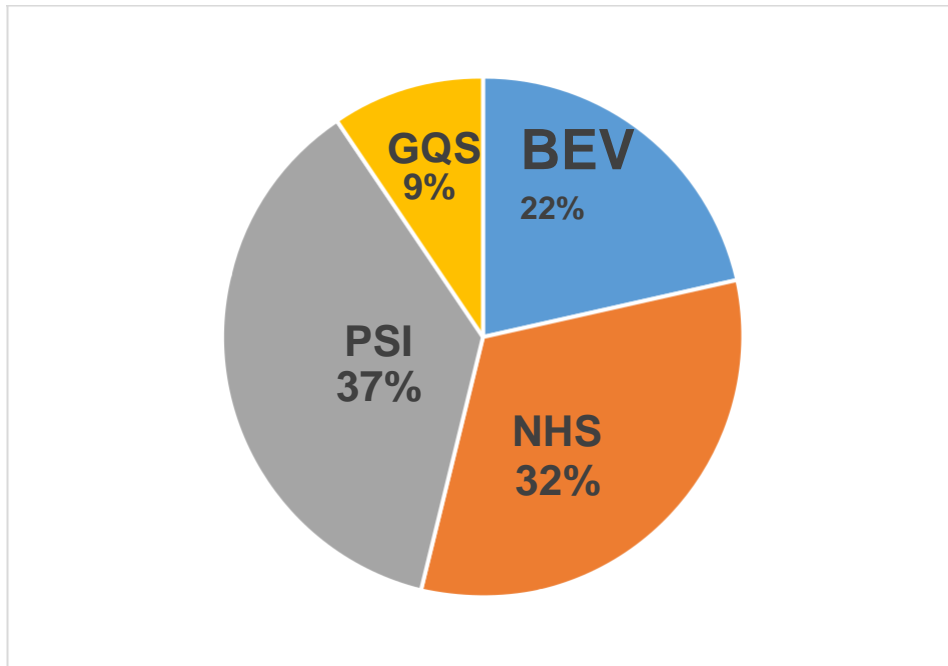
(Source: VMS 2016 Data sheet.)

The graph above represents the total number of days at sea utilized by each of the industrial Seabob companies. Each company was allotted a total of 224 nominal days at sea (The nominal time specifies the time when something should happen. In theory the nominal time and the actual time should match, however, in practice due to delays the actual time may occur later than the nominal time.) per vessel. Each company was capped by the number of registered vessels multiplied the 224 days, the days at sea cap for each of the monitored companies' can be found in **appendix II**.

From January to December 2016 a total of 15,416 days were sent at sea this represents 83.92% of the total allowable industrial days at sea of 18,368. Pritipaul Singh Investments Inc. utilized 5,662 of their 6,272 days' quota representing 90.27% efficiency, Noble House Seafoods Ltd. was second with a total of 4,980 of their 6,048 days' quota utilized, this translated to 82.34% execution efficiency. BEV processors Inc. spent 3,313 of their 3,808 allotted days which represents an 87% execution efficiency, higher than that of Noble House Seafoods Inc., this is due in part to the difference in

vessel numbers. Guyana Quality Seafood Inc. total in at 1,461 days utilized out of their 2,240 days at sea cap, this represents an 65.22% execution efficiency.

Figure. 2. Representative analysis of the days at sea usage for the industrial Seabob companies.



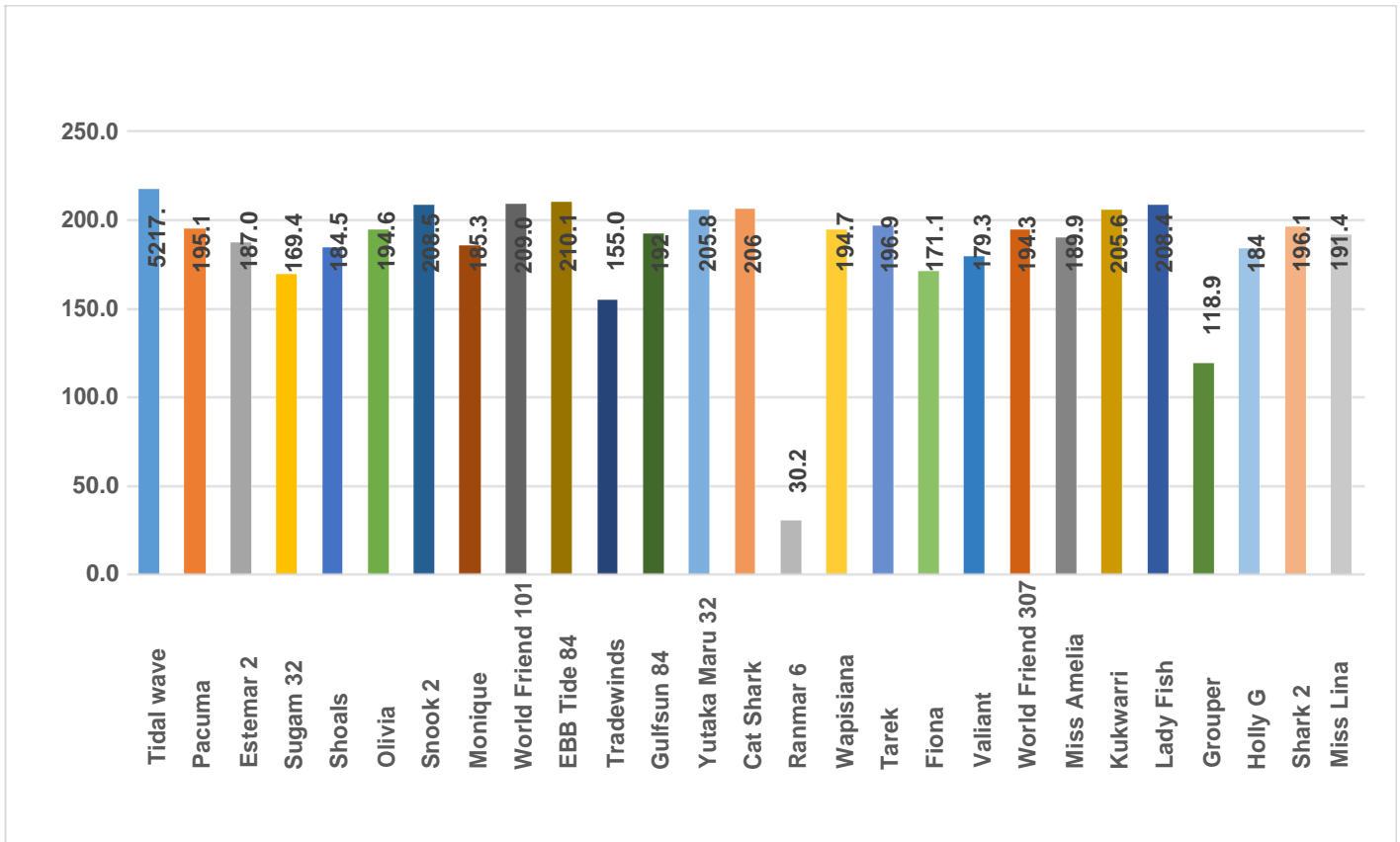
(Source: VMS 2016 Data sheet.)

Graph 2. Highlights the company utilization percentage from the total executed fishing days provided to the industrial Seabob fishery of Guyana, this is not to be confused with the total allowable days at sea provided to the industry of which Pritipaul Singh Investments Inc. is allotted 34%, Noble House Seafood Ltd. 33%, BEV processors Inc. 14% and Guyana Quality Seafood Inc. 12%.

Pritipaul Singh Investments Inc. days at sea represents 37% of the total executed fishing days provided to the industrials fleet, which can be interpreted as higher sail rates or sailing periods per vessel when compared to other companies, Noble house Seafood Ltd.'s 32% also indicates high fishing activities (sail rates). BEV processors Inc.'s 22% is a good indication of the high level of fishing activities executed in 2016, this is also

reflected in log sheet information submitted to the Fisheries Department, the median days at sea for BEV were recorded as 8 per vessel per trip.

Figure. 3. Shows the Monitoring Systems Analysis of Noble House Seafoods Ltd. Seabob vessels for 2016.



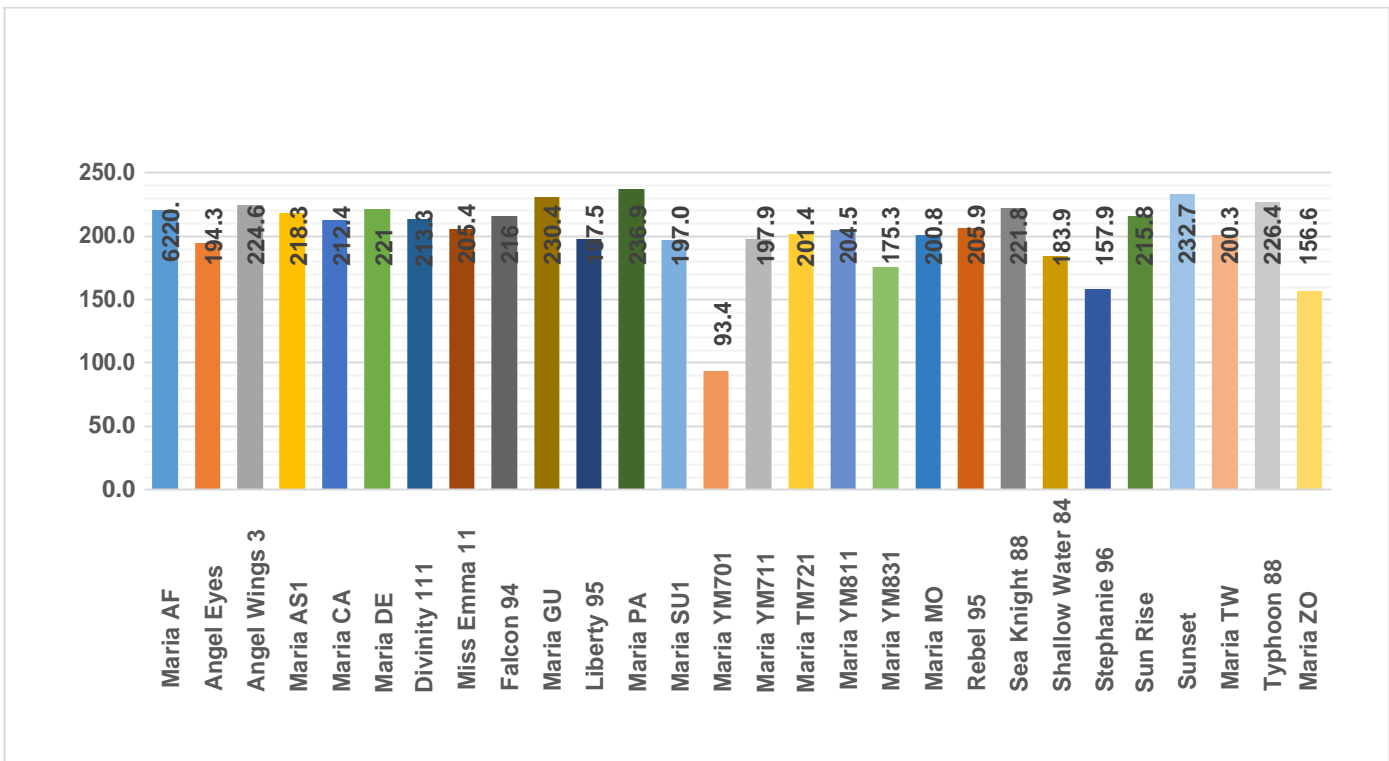
Vessel Performance

The overall performance of Noble House Seafood Ltd. Can be considered ideal, the company executed trips totaling 4,980 nominal days at sea. Ranmar 6 only utilized 30 of its 224 days as it was reported as being under repairs.

Vessels over stipulated days at sea

No vessel was recorded surpassing their individual 224 days at sea for the period under review, when cross referenced with log sheet information submitted to the Fisheries Department by Noble House Seafood Ltd. Several difference were observed with regards to days spent at sea, however when calculated the same remained true a no vessel was recorded as being above the established days.

Figure. 4. Shows the Monitoring Systems Analysis of Pritipaul Singh Investments Inc. Seabob vessels for 2016.



Vessel Performance

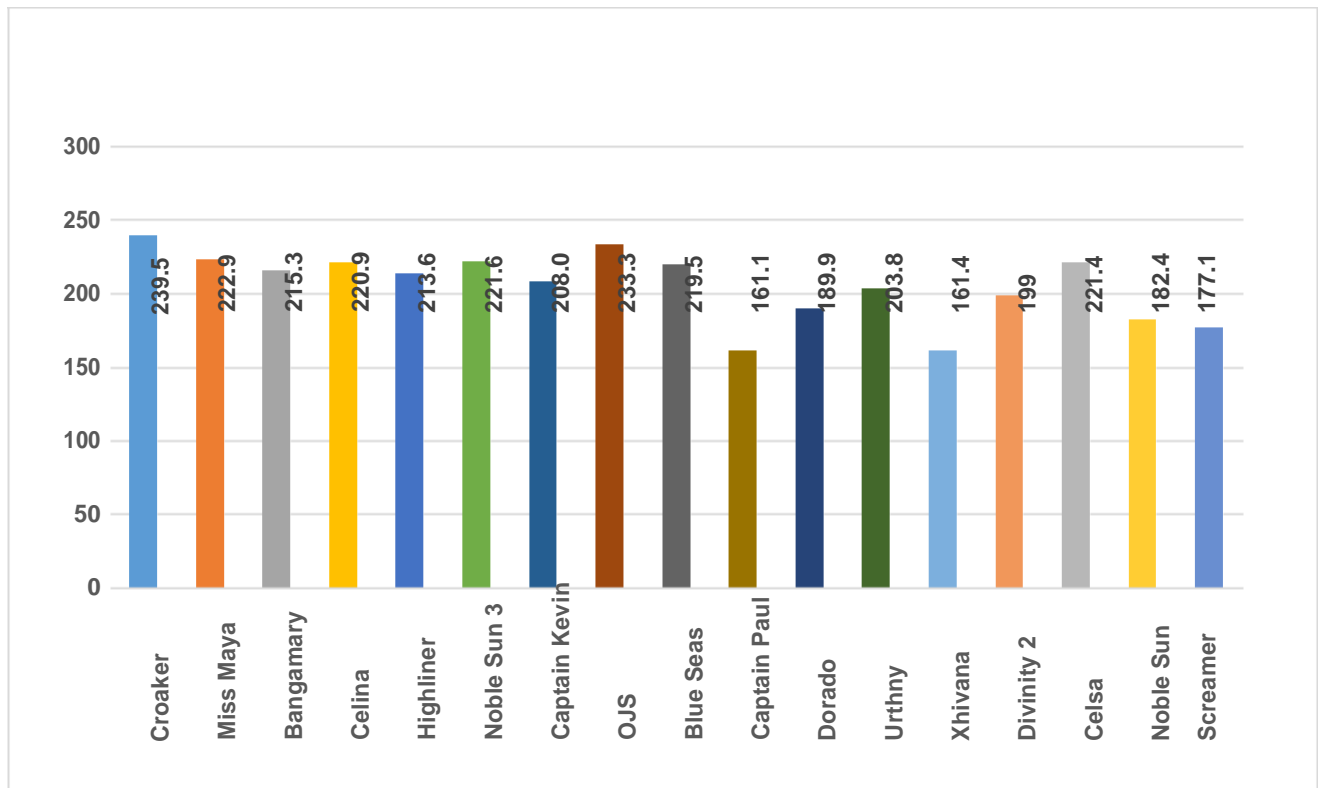
Pritipaul Singh Investments overall performance can also be characterized as good especially when compared to 2015. With the exception of Maria YM701 which only recorded 93.4 days at sea for the reviewing period, all vessels recorded days in excess

of 115 days at sea reflected as to higher departure rates and efficiency with regards to individual licensed approved days at sea (224).

Vessels over stipulated days at sea

Pritipaul Singh Investments Inc. had four (4) vessels which exceeded the outlined 224 days at sea, these vessels were: Maria PA (12), Sunset (8), Typhoon 88 (2) and Maria GU (6). The total days exceeded were 28. It should be noted that when crossed checked with the log sheet information submitted to the Fisheries Department by Pritipaul Singh Investments Inc. there were also calculated as being above the established time period.

Figure. 5. Shows the Monitoring Systems Analysis of B.E.V Processors Inc. Seabob vessels for 2016.



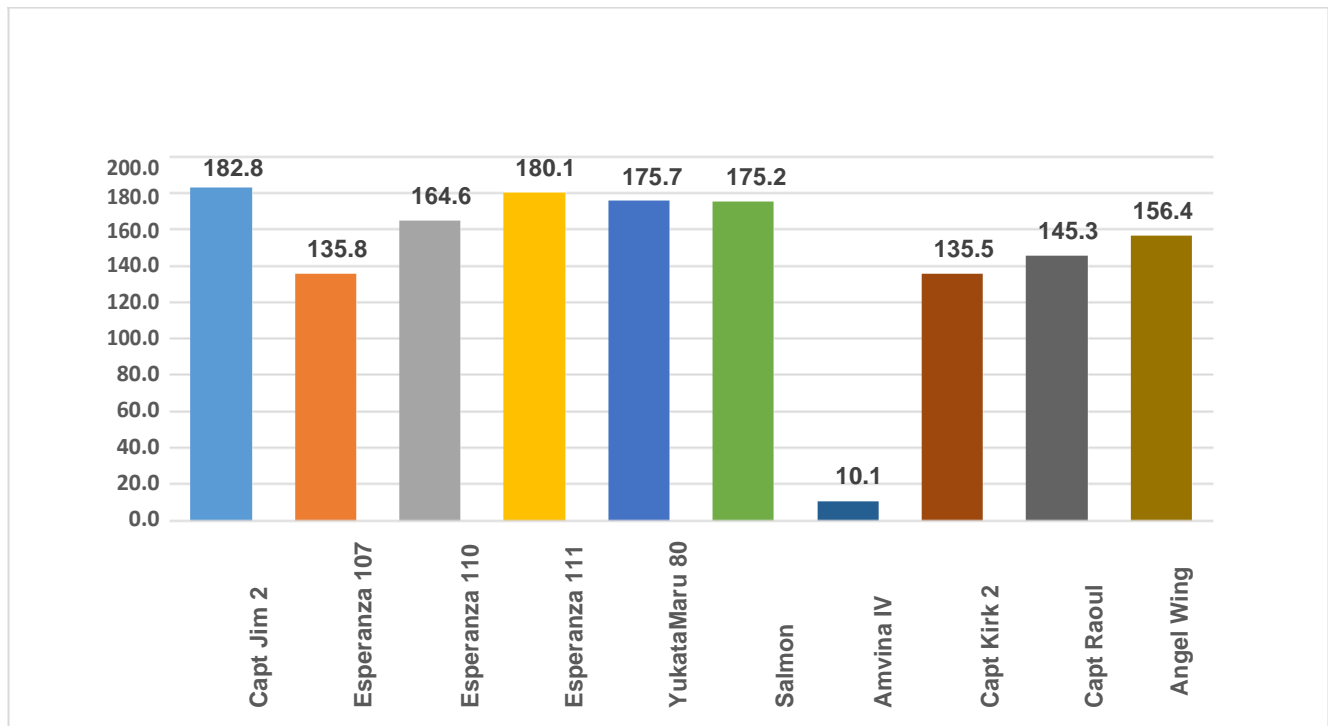
Vessel Performance

B.E.V Processors Inc. overall performance is considered to be very good, the company's vessels executed several trips majority extending and sometimes even exceeding 8 days at sea per vessel, with the exception of the vessel captain Paul and xhivana which utilized 161 days at sea, the remaining vessel surpassed the 177days point a clear indication of high fishing activity.

Vessels over stipulated days at sea.

B.E.V Processors Inc. had two (2) vessels which exceeded the outlined 224 days at sea, these vessels were: Croaker (15) and OJS (9). The total days exceeded were 24. It should be noted that when crossed checked with the log sheet information submitted to the Fisheries Department by B.E.V Processors Inc. there were also calculated as being above the established time period.

Figure. 6. Shows the Monitoring Systems Analysis of Guyana Quality Seafoods Inc. Seabob vessels for 2016.



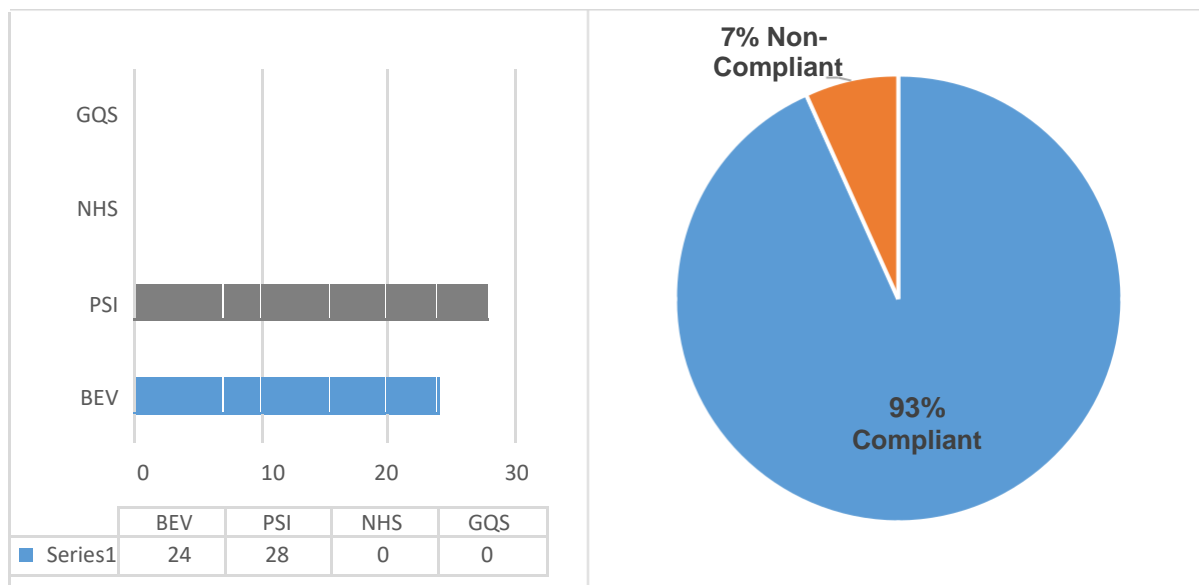
Vessel Performance

Guyana Quality Seafoods Inc.'s performance in 2016 can be considered as fair, it is an improvement over 2015 with the majority of vessels surpassing the 120 days at sea point, with the exception of Amvina IV which was lost at sea.

Vessels over stipulated days at sea

None of Guyana Quality Seafoods Inc. vessels were observed exceeding the established license limit of 224 nominal days.

3. Analysis of Industrial Seabob Vessels that exceeded the total allotted days at sea and the overall industrial compliance average comparison.



Vessels which exceed the established 224 days at sea

BEV- 24

PSI – 28

Infringements

All vessel infringements were cataloged on a monthly basis and presented in the monthly VMS report, this represents a summary of all infringements by the trawling vessels for the period January – December, 2016.

NO TRAWLING ZONE ENTRY – NTZE

Below the 7 fathom line – 90+ min. (All vessels)

Below the 7 fathom line – 90+ min. (Seabob Vessels)

NO BEACON SIGNAL RECIEVED – NBSR

No signal transmission – 12 hrs. (All vessels)

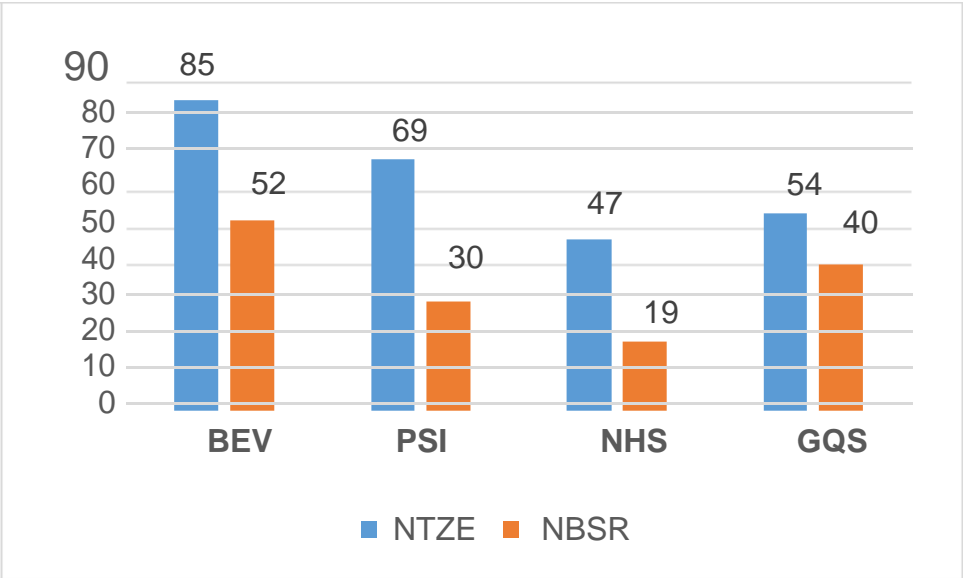
Total infringements of the industrial Seabob fleet.

In 2016 the total recorded infringements for the industrial Seabob fleet was three hundred and ninety-six (396). Of the total, one hundred and forty-one (141) were registered loss of beacon signal while two hundred and fifty-five (255) were NO Trawling Zone Entry.

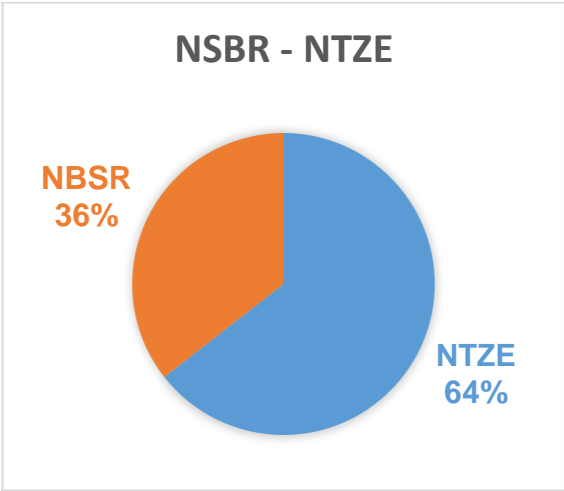
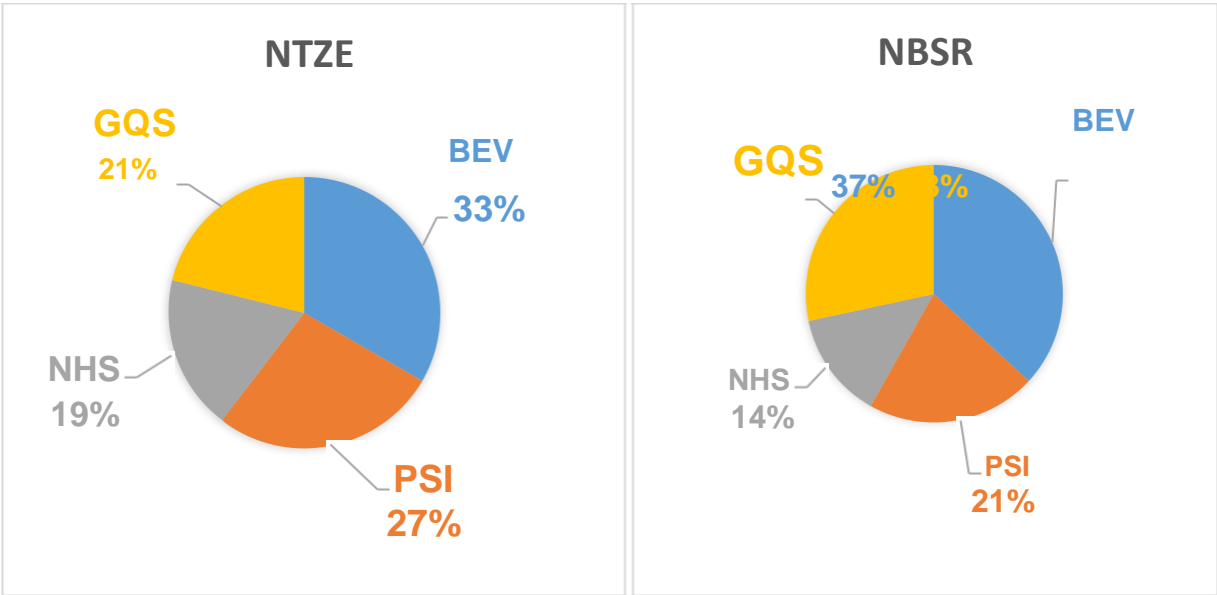
The principal issues affecting the Seabob Industrial Fleet were conveyed to the Fisheries Department via the Seabob Working Group (SWG). They stated, that the seven-fathom line's location needed to be officially conveyed by the appropriate agency in an effort to further reduce the occurrence of line breaches.

COMPANY	NTZE	NBSR
Pritipaul Singh Investments Inc.	69	30
Noble House Seafood Ltd.	47	19
B.E.V Processors Inc.	85	52
Guyana Quality Seafoods Inc.	54	40
Total		396

Figure. 7. Company Comparison of infringements; No Beacon Signal and No Trawling Zone Entry.



Company Comparison of infringements; No Beacon Signal and No Trawling Zone Entry.



Conclusion

The overall performance of the Seabob Industry can be considered, satisfactory, this is highlighted when comparing the results of 2015 and 2016. Several challenges continue to plague the department with regards to compliance and enforcement, namely Days at Sea Calculation, VMS data analysis and identification of agreed fishing zones and limitations i.e. fathom lines.

In 2017 the Legal and Inspectorate Unit intends to increase its effort through regular updates, timely submission of reports and continued interfacing to provide technical support and clarity in fisheries legal, monitoring and control services.

Appendix

Appendix I. The Summary of all days spent at sea as per company.

Companies	No. of vessels	Total allowable days at sea
BEV	17	3808
PSI	28	6272
NHS	27	6048
GQS	10	2240
TOTAL	82	18368

Appendix II. The Summary of all fishing activates as recorded by the Vessel Monitoring System (VMS) Guyana spent at sea as per company.

Comp.	Vessel Name	Beacon No.	January	February	March	April	May	June	July	August	October	November	December	Total	
BEV	Croaker	123817	23:18:47	28:6:44	20:2:00	29:22:59	23:23:33	19:6:13	18:13:16	21:15:22	8:20:0	24:8:00	20:23:35	239.5	
	Miss Maya	123823	23:16:43	27:19:34	20:3:09	19:9:20	16:14:00	17:18:06	26:23:00	12:1:21	13:19:16	27:18:49	17:1:00	222.9	
	Bangamary	123824	23:5:45	27:15:32	12:22:00	17:21:27	27:10:12	16:21:50	27:17:53	18:7:49	8:23:0	16:4:41	18:7:26	215.3	
	Celina	123831	24:1:23	17:15:40	18:19:51	22:18:00	27:08:29	14:16:45	25:10:29	16:16:17	14:0:23	25:3:58	14:11:00	220.9	
	Highliner	123846	27:9:57	16:7:58	27:14:19	19:12:08	05:18:00	26:11:47	18:17:00	19:14:35	16:17:0	17:20:51	17:20:29	213.6	
	Noble Sun 3	123859	26:1:00	18:7:45	17:15:55	19:18:38	27:18:05	22:0:57	19:00:00	18:22:37	6:10:14	27:3:44	18:17:54	221.6	
	Captain Kevin	123938	25:17:28	18:21:00	23:2:15	18:9:32	18:18:29	18:19:42	19:5:00	20:15:41		25:11:30	19:2:14	208.0	
	OJS	124308	24:19:16	20:22:51	27:2:35	18:15:56	22:02:25	22:7:34	22:4:26	16:17:47	11:23:40	26:19:28	19:20:34	233.3	
	Blue Seas	124307	29:8:50	16:23:00	31:17:58	13:21:31	21:20:06	19:8:14	18:9:35	13:14:59	9:20:47	22:14:00	22:1:25	219.5	
	Captain Paul	124311	21:6:19	17:10:23	18:23:54	9:17:19	06:20:33	16:20:56	14:18:00	14:17:29	8:9:26	16:19:52	15:10:24	161.1	
	Dorado	124314	24:17:45	26:14:48	13:1:00	18:22:48	28:11:19	18:0:33	16:15:03	10:8:47		15:7:00	17:22:38	189.9	
	Urthny	124323	27:17:41	16:13:32	18:23:00	21:22:33	18:20:00	21:20:41	18:22:16	9:00:00	15:16:45	16:20:34	17:14:31	203.8	
	Xhivana	124336	19:22:47	16:8:16	20:0:54	25:8:47	16:03:37	15:7:24	13:8:37	12:9:28	7:2:0	11:11:00	4:4:00	161.4	
	Divinity 2	124356	27:2:21	25:17:31	16:6:39	18:14:00	18:00:48	26:13:13	16:19:21	9:2:59		24:14:10	16:9:00	199	
	Celsa	124369	25:8:00	25:13:59	18:16:35	18:2:00	25:09:48	24:20:11	15:7:14	13:22:40	8:3:23	25:1:29	21:4:50	221.4	
	Noble Sun	124373	26:11:28	18:15:54	14:2:24	30:9:29	17:19:10	18:19:30	15:11:40	7:17:49	24:6:14	8:20:12	8:20:12	182.4	
	Screamer	124408	26:4:10	17:17:43	23:2:32	17:21:11	15:20:45	16:11:00	6:16:00	9:9:01	9:18:29	20:2:36	14:2:28	177.1	
	Total														3313.4

Comp.	Vessel Name	Beacon No.	January	February	March	April	May	June	July	August	October	November	December	Total
NHS	Tidal wave	123819	17:15:54	16:3:10	25:13:43	16:15:06	26:22:29	17:11:58	27:9:59	17:2:00	8:7:44	27:11:46	16:23:32	217.5
	Pacuma	123821	28:4:43	15:0:48	17:12:55	24:4:08	26:03:54	24:11:43	19:21:00	17:19:52			20:22:51	195.1
	Estemar 2	123828		10:7:28	25:8:35	19:7:40	19:02:00	22:15:23	18:17:51	18:13:46	17:18:22	18:14:53	16:18:26	187.0
	Sugam 32	123833	22:14:10	8:19:00		9:17:00	15:19:52	15:21:48	27:20:59	16:22:43	13:18:48	23:10:42	15:3:43	169.4
	Shoals	123834	21:18:13	17:15:57	21:5:20	8:16:54	07:19:30	24:21:34	27:5:51	11:12:00	7:2:39	18:16:06	18:3:25	184.5
	Olivia	123835	24:23:27	19:4:21	24:20:19	9:9:00	07:19:00	23:7:59	15:11:12	24:1:14	7:4:38	19:1:56	19:11:37	194.6
	Snook 2	123850	24:16:00	17:11:00	14:0:00	26:20:30	15:11:25	23:5:52	17:12:33	17:0:45	8:2:0	24:2:09	15:1:07	208.5
	Monique	123857		9:7:00	27:17:24	15:12:49	25:22:00	23:22:01	26:8:50	17:1:55	15:7:53	13:13:04	10:17:48	185.3
	World Friend 101	123949	24:21:24	17:9:49	19:20:00	26:21:45	15:19:06	24:6:39	17:9:00	16:8:00	6:22:0	25:0:11	14:10:30	209.0
	EBB Tide 84	123957	23:14:18	15:9:28	22:19:58	25:6:29	13:23:11	15:11:20	27:7:01	17:11:38	15:3:15	22:18:36	11:2:26	210.1
	Tradewinds	124388	19:6:36	15:3:48	24:18:49	23:20:20	07:19:39		8:17:03	15:0:51	6:21:29	18:18:58	14:20:55	155.0
	Gulfsun 84	123958	19:0:27	20:11:00	27:19:40	20:8:07	18:06:59	8:11:53	15:8:10	21:8:46	7:3:6	24:4:23	9:18:32	192
	Yutaka Maru 32	124396	26:2:19	15:13:00	22:4:13	18:15:52	27:23:42	22:15:02	14:0:45	12:9:09	8:1:32	23:2:56	14:21:17	205.8
	Cat Shark	124320	24:19:24	18:6:00	26:10:10	26:21:00	13:21:22	17:4:42	18:14:45	13:11:39	7:6:0	23:8:09	16:0:31	206
	Ranmar 6	124359	21:19:29	8:10:00										30.2
	Wapisiana	124377	20:3:41	17:3:00	24:6:14	22:22:00	22:12:23	17:15:02	14:22:31	10:0:36	6:20:9	21:5:58	17:6:07	194.7
	Tarek	124313	22:22:39	18:19:24	17:1:48	26:6:18	18:05:40	20:17:05	20:15:28	13:6:01	8:5:55	17:19:00	13:3:21	196.9
	Fiona	124493	23:0:53	12:9:12	26:15:13	23:14:25	07:22:00	24:5:53	17:8:01	7:7:01	0:10:47	11:3:50	17:5:35	171.1
	Valiant	124394	24:20:25	18:20:29	28:4:40	20:1:08	19:12:15	20:2:13	12:22:05	10:11:38	8:16:45	8:15:00	7:5:41	179.3
	World Friend 307	124398	25:15:02	14:17:48	23:7:00	24:5:11	13:17:05	24:10:38	15:17:18	14:16:15	6:10:13	24:4:00	7:9:49	194.3
	Miss Amelia	124370	18:4:14	19:22:50	17:3:49	26:21:09	16:00:00	24:5:22	3:22:31	16:10:43	8:6:29	22:3:50	16:21:30	189.9
	Kukwarri	124278	21:19:54	22:12:56	21:19:00	19:14:35	19:03:57	17:1:29	19:17:00	11:16:01	16:9:49	17:6:14	18:19:46	205.6
	Lady Fish	124263	25:19:28	17:21:19	18:10:41	28:18:31	18:15:24	19:0:28	18:19:21	13:18:47	5:19:49	23:18:41	17:19:48	208.4
	Grouper	124350		17:4:42	9:12:00	9:4:00		23:2:24	11:00:00	9:11:00		24:0:42	15:13:00	118.9
	Holly G	124249	26:9:21	17:16:25	9:12:00	8:20:00	23:10:01	19:22:43	20:8:09	10:12:52	8:21:0	22:0:15	16:14:38	184
	Shark 2	124494	24:22:31	17:15:35	21:7:10	14:9:18	28:10:36	18:1:30	16:15:07	9:11:29	9:6:45	21:9:46	14:17:02	196.1
	Miss Lina	154462	23:2:45	14:6:44	20:22:47	16:12:00	21:18:00	18:16:06	15:6:31	15:7:45	6:6:51	24:9:15	15:1:36	191.4
Total														4980.6

Comp.	Vessel Name	Beacon No.	January	February	March	April	May	June	July	August	October	November	December	Total
PSI-S	Maria AF	124406	26:7:59	22:2:00	27:13:13	22:21:38	20:19:21	22:21:23	19:23:28	14:3:00	7:2:44	18:7:13	18:16:22	220.6
	Angel Eyes	124299	24:14:38	26:0:33	20:13:15	7:10:35	16:10:41	22:9:01	15:3:12	11:12:01	7:7:49	22:14:27	20:9:57	194.3
	Angel Wings 3	123792	22:8:42	22:5:29	24:13:02	27:14:26	13:14:27	20:5:44	30:13:55	18:5:13	6:2:11	22:13:41	16:19:01	224.6
	Maria AS1	124371	27:14:40	21:20:00	23:3:18	27:13:29	19:16:38	20:23:55	17:13:07	10:12:55	6:4:59	22:22:19	20:10:49	218.3
	Maria CA	124304	28:5:27	20:16:36	21:17:00	25:11:00	25:02:39	17:18:01	15:8:38	7:2:48	8:14:24	23:4:33	19:8:26	212.4
	Maria DE	123832	26:5:09	19:20:29	23:5:34	20:6:30	26:16:16	21:18:08	18:19:38	16:5:22	6:1:0	26:5:11	15:20:50	221
	Divinity 111	124404	26:21:16	22:0:00	20:19:58	29:0:09	18:10:46	25:12:00	17:16:31	7:0:49	6:9:53	22:20:56	16:18:09	213.3
	Miss Emma 11	124284	23:0:46	18:0:43	22:11:25	20:20:33	24:17:14	23:4:06	15:9:14	8:4:52	7:16:0	20:17:05	21:7:26	205.4
	Falcon 94	124441	26:20:17	21:4:55	23:18:23	20:18:47	26:12:30	21:23:38	16:9:00	7:21:00	7:4:21	22:13:54	21:1:49	216
	Maria GU	123883	27:13:41	22:17:16	20:21:00	27:0:00	19:23:20	24:2:00	24:14:46	16:12:00	6:6:22	23:16:36	17:6:03	230.4
	Liberty 95	124353	25:16:03	23:16:29	13:17:00	17:9:53	19:05:03	20:3:19	21:11:04	6:0:50	5:23:0	22:2:08	22:7:12	197.5
	Maria PA	123855	27:17:32	23:0:04	23:13:47	20:3:06	26:10:14	23:16:17	25:3:23	22:2:37	9:20:31	18:0:46	17:7:36	236.9
	Maria SU1	123849	25:22:23	22:6:59	27:17:00	7:2:17		22:12:53	28:17:59	20:14:33	5:0:33	18:2:50	19:2:16	197.0
	Maria YM701	123951	23:15:44	22:13:38	26:6:53	19:19:16	27:01:00							93.4
	Maria YM711	124422	26:0:40	23:7:27	22:10:31	22:11:22	13:22:18	20:5:49	17:14:37	7:9:55	6:8:59	20:6:35	18:0:28	197.9
	Maria TM721	123795	24:13:59	20:22:00	26:19:44	25:18:18	17:03:00	12:3:12	16:0:27	16:7:47		22:15:25	19:5:51	201.4
	Maria YM811	123796	28:17:33	20:14:59	21:15:18	11:20:00	11:12:26	20:10:39	19:18:19	24:6:53	7:2:0	20:7:42	18:11:00	204.5
	Maria YM831	123939		13:1:00	21:14:11	25:18:00	20:19:11	27:1:20	19:15:11		5:19:38	21:4:00	20:12:40	175.3
	Maria MO	124444	29:21:17	20:12:59	11:16:00	12:16:41	27:03:29	20:1:03	20:17:18	15:5:43		22:18:52	20:5:24	200.8
	Rebel 95	124286	23:12:39	20:16:51	25:13:00	25:10:07	18:18:23	20:22:18	14:15:18	10:20:01	5:21:51	24		

